



KANSAS
MATERNAL &
CHILD HEALTH

Annual Report 2024-2025



Kansas Maternal & Child Health Council
SFY 2025 Annual Report

TABLE OF CONTENTS

<u>EXECUTIVE SUMMARY</u>	<u>3</u>
<u>MINUTES FOR EACH MEETING</u>	<u>7</u>
<u>KMCHC WEBSITE DATA 2024-2025</u>	<u>30</u>
<u>KMCHC FACEBOOK INSIGHTS 2024-2025</u>	<u>33</u>



Kansas Maternal and Child Health Council 2025 Executive Summary

The Kansas Maternal Child Health Council (KMCHC) advises the Secretary of Health and Environment and other stakeholders on strategies to enhance the health and well-being of families across Kansas, with a particular emphasis on the maternal and child health (MCH) population. Comprising a diverse membership of Kansas organizations and groups, the Council leverages extensive expertise and longstanding dedication to improving MCH outcomes. The Council's key activities include:

- **Facilitates Information Exchange:** Promotes information sharing and data exchange among stakeholders about women, infants, children, and adolescents.
- **Advises on Progress:** Provides insights and assessments on the progress made in addressing the specific needs of the MCH population.
- **Builds support:** Fosters collaboration between the private and public sectors to support initiatives to improve MCH health outcomes.
- **Focuses Efforts:** Directs and aligns the efforts of various partners, recommending joint initiatives to enhance efficiency and impact.
- **Reports Annually:** Compiles and submits an annual report detailing the Council's activities and recommendations to the Kansas Secretary of Health and Environment.

The KMCHC's efforts significantly impact maternal and child health in Kansas. It ensures a coordinated, informed approach, driving continuous improvement and impactful change for the MCH population.

Summary of Activities for State Fiscal Year 2025

This summary highlights the activities of the KMCHC during the SFY 2025 from July 1, 2024, to June 30, 2025. The Council held virtual meetings on July 10, 2024, January 15, 2025, and met in person on October 9, 2024, and May 7, 2025. The Kansas Maternal & Child Health Council (KMCHC) advanced its role as a strategic advisory body to state leadership by elevating emerging policy risks, strengthening cross-sector collaboration, and advancing domain-specific projects aligned with Title V priorities. Across meetings, members

consistently emphasized the need for sustainable funding, data protection, workforce support, and clearer communication between policy decisions and their real-world impact on Kansas children and families.

Key Policy and Funding Context

KMCHC received multiple state and federal updates highlighting both opportunity and uncertainty. Legislative briefings underscored the fast-moving policy environment and the vulnerability of maternal and child health (MCH) programs to federal funding shifts. Concern was raised about potential disruptions to critical data sources such as PRAMS and the long-term sustainability of programs like newborn screening, maternal mental health initiatives, and birth defects surveillance. Members emphasized the importance of proactive contingency planning, improved advocacy messaging, and clearer articulation of how funding decisions affect child and family outcomes.

Title V and State System Developments

The Council reviewed findings from the Title V MCH Needs Assessment, which identified persistent and interconnected challenges across the lifespan, including maternal mortality, limited access to obstetric and behavioral health care, infant mortality and SUID, low developmental screening rates, rising adolescent behavioral health and firearm-related deaths, and care coordination gaps for children with special health care needs. KDHE updates also highlighted organizational changes, new staffing, and the development of the Office of Early Childhood, reinforcing the need for strong alignment between state initiatives and KMCHC priorities.

Key Activities and Discussions

Large Group Discussions

July 10, 2024 | Virtual Meeting

The July meeting introduced several statewide maternal and child health initiatives and funding opportunities. KDHE presented the new Maternal Health Innovation grant and highlighted the importance of broad stakeholder representation, particularly from rural and western Kansas. Council members also received updates on the Title V Maternal and Child Health Block Grant, Medicaid enrollment outreach efforts, and community-based supports such as Head Start and family health literacy programs. The meeting reinforced the Council's advisory role in connecting state initiatives with on-the-ground implementation.

October 9, 2024 | Topeka

This meeting emphasized the role of care extenders and workforce supports in improving maternal and child health outcomes. A panel discussion highlighted how doulas,

community health workers, lactation consultants, and parent peer specialists provide wraparound services and bridge gaps in care. KDHE shared updates on internal staffing and program capacity, including mental health consultation resources. The discussion underscored the importance of consistent messaging, sustainable funding, and integration of care extenders across systems.

January 15, 2025 | Virtual Meeting

The January meeting focused on program impact, prevention, and data-informed decision-making. Presentations included overviews of Head Start services in Kansas, safe sleep and infant mortality data from the Kansas Child Death Review Board, and updates on the Kansas Birth Defects Program. Legislative updates highlighted fiscal pressures and the need to protect core maternal and child health services. The meeting reinforced the value of cross-system collaboration and early intervention to prevent avoidable adverse outcomes.

May 7, 2025 | Topeka

The May meeting addressed state and federal policy developments and emerging system-level risks. The Council reviewed the 2025 legislative session, Title V needs assessment findings, and KDHE updates including the development of the Office of Early Childhood. Members discussed significant challenges facing maternal and child health populations, including access to care, behavioral health needs, and rising infant and adolescent risks. A CMS-funded school-based Medicaid enrollment services grant was also presented, highlighting opportunities to strengthen access to care through schools. The meeting reinforced the need for transparency, data protection, and proactive planning amid federal funding uncertainty.

Domain Workgroup Progress and Themes

Across all four domain workgroups (Women/Maternal; Perinatal/Infant; Child; Adolescent), several cross-cutting themes emerged:

- **Preservation of core programs amid uncertainty:** Workgroups increasingly shifted from expansion efforts to strategies that protect existing services, data systems, and infrastructure.
- **Workforce and care extenders:** Members consistently highlighted the critical role of doulas, community health workers, lactation consultants, parent peers, and behavioral health providers — alongside concerns about inconsistent training, inadequate compensation, quality of care provided and reliance on short-term funding.

- **Data access and communication:** There was strong consensus on the need to safeguard MCH data, improve interoperability, and translate policy and funding changes into accessible information for communities and families.

Notable workgroup initiatives included:

- Expansion of maternal mental health hotline awareness and exploration of more efficient distribution of HRSA materials.
- Continued implementation and evaluation of the “Welcome Baby” postcard pilot to connect new families with trusted resources.
- Development of strategies to preserve and elevate family voice through testimony and storytelling, particularly in programs facing potential funding cuts.
- Collaboration with the Kansas Leadership Center to integrate civic health and engagement into youth leadership programming, with a focus on long-term resilience and adolescent mental health.

Strategic Direction and Next Steps

Collectively, the Council affirmed the importance of:

- Strengthening KMCHC’s advisory role through regular engagement with KDHE leadership and alignment with related bodies (e.g., TMaH, behavioral health councils).
- Enhancing transparency around funding flows, program beneficiaries, and decision-making processes.
- Supporting workgroups with clear expectations, measurable outcomes, and flexibility to respond to policy and funding changes.
- Continuing to elevate Kansas-specific data, stories, and partnerships to inform both state and federal discussions.

KMCHC will carry these priorities forward into upcoming meetings, with continued emphasis on coordination, sustainability, and ensuring that policy decisions meaningfully improve outcomes for Kansas mothers, children, and families.

Council Membership and Participation

The KMCHC membership comprises a multidisciplinary team of professionals, family members, and other key stakeholders. In SFY 2025, 37 stakeholders were members: 27 partner members, 8 provider members, and 2 family/consumer members. Additionally, 29 KDHE staff contributed to Council activities by providing content expertise, facilitating workgroup discussions, recording, and offering data support. The Council also had three contracted staff members to manage meeting logistics and overall facilitation.



**Kansas Maternal & Child Health Council (KMCHC)
July 10, 2024, 9:00 a.m. - 12:00 p.m., Virtual Meeting
Meeting Minutes**

Time	Agenda	Minutes
9:00 am (15 min)	Welcome and Member Introductions <i>Kari Harris, MD, KMCHC Chair</i>	Dr. Harris welcomed attendees. New members and guests introduced themselves.
9:15 am (10 min)	Member Updates <ul style="list-style-type: none"> • <i>Lisa Chaney, Greenbush/SW Kansas Education Center</i> • <i>Heather Schrotberger, Kansas Health Start Association</i> 	<ul style="list-style-type: none"> • Lisa Chaney highlighted the Greenbush/SW Kansas Education Service Center and their work. Ms. Chaney’s presentation is posted on the KMCHC website. • Heather Schrotberger presented the Kansas Head Start Association and its support to Head Start service providers. The group discussed its Parent Health Literacy Program, What to Do When Your Child Gets Sick.
9:25 am (25 min)	Maternal Health Innovation(MHI) <ul style="list-style-type: none"> • Kayla Stangis, MHI Coordinator, KDHE Bureau of Family Health 	<p>Kayla presented a new KDHE Grant, the Maternal Health Innovation grant. Her slides are posted on the KMCHC website.</p> <p>KDHE seeks representation from nurse midwives and birth centers to participate in strategic planning. Representation from western Kansas is vital. The first stakeholder meeting will be held on July 22 in Salina.</p>
9:50 am (20 min)	Update on Maternal and Child Health Block Grant <i>Jennifer Miller, State MCH/Title V Director - KDHE Bureau of Family Health</i>	Cora Ungerer presented on Jennifer Miller’s behalf. Ms. Miller’s slides are posted on the KMCHC website .
10:10 am (5 minutes)	Medicaid Enrollment Events – Community Grants <i>Melissa Guerrero, Outreach and Event Coordinator, Kansas Chapter, American Academy of Pediatrics</i>	KAAP continues to offer small grants (up to \$2,500) to support community awareness and enrollment events focused on Medicaid enrollment. Applications will be accepted through August 15, 2024, and events must be implemented by September 1, 2024. To apply, visit the KAAP website here .

10:15 am (1 hr 15 min)	Domain Work Group Discussion <ul style="list-style-type: none"> • Women/Maternal • Perinatal/Infant • Child • Adolescent 	The Domain Work Groups met to discuss the most critical takeaways from today’s presentations and plan their special projects. KAAP has approximately \$1,500 per group for a special project that must be completed by June 30, 2025.
11:30 am (20 min)	Domain Work Group Report Out <i>Domain Work Group Reporters</i>	<p><u>Women/Maternal:</u> Project: Develop a universal, consistent prenatal risk assessment form that includes clinical and social determinants of health data.</p> <ul style="list-style-type: none"> • The work group will meet before the October meeting to examine existing tools and seek input from organizations/groups already doing this. One example is Missouri, which has a standardized form and process. • The work group determined this would also require a social media package. • This could align with the CMS Transforming Maternal Health (TMaH) Model funding. KDHE Medicaid is currently considering submitting a grant application. <p><u>Perinatal/Infant:</u> Project: Welcome postcard for all Kansas babies.</p> <ul style="list-style-type: none"> • This project will leverage resources/information from the KDHE newborn screening program. • Welcome postcards would be sent to all families with infants with “normal” newborn screen results. • A QR code on the postcard will link families to helpful resources. • The workgroup will review the postcard language and graphics, identify resources to post on the KDHE website, determine logistical arrangements, and find funding sources. • The goal is to pilot this by the end of the calendar year. <p><u>Child:</u> Project: Help parents and caregivers access resources to address their child’s behavioral health needs.</p> <ul style="list-style-type: none"> • The work group will first identify resources that would be helpful to families – what do they need? They are considering conducting focus groups or an online survey to gather this information. • The workgroup will create a shared Teams Channel to communicate about this project before the October meeting. • The goal is to have a plan for finalization at the October KMCHC meeting. <p><u>Adolescent:</u> Project: Improve civic engagement for adolescents.</p> <ul style="list-style-type: none"> • The workgroup would like to partner with other groups or organizations already working in his space; several were identified during the meeting. • They may develop a social media campaign regarding voter registration, voting, and other types of civic engagement. August is Civic Health Month, which could be a kick-off to the campaign. • The work group has agreed to meet before October to finalize their plan and request funding. • The group is committed to using this project as a first step toward developing a larger initiative with the possibility for a more significant impact.

11:50 am

Member Announcements – Open floor for KMCHC members and meeting attendees to share important information.

Leah Trieu and Marina Hernandez are interns at KDHE Maternal and Child Health. They are working on a project focused on fatherhood. The project will build an inventory of fatherhood resources, conduct key informant interviews with leaders and champions of organizations/programs working with fathers, and conduct focus groups with fathers/non-birthing parents to identify their needs.

Brenda Bandy, Kansas Breastfeeding Coalition. Registration opens next week for their annual Breastfeeding Conference, which will be held October 17-18 in Wichita.

The **Kansas Tobacco Quitline, Pregnancy, and Postpartum Program** offers five coaching sessions during pregnancy and four sessions after childbirth with the same female coach. After each completed coaching call, the Kansas Tobacco Quitline will mail a \$40 Mastercard gift card to the individual's address if they enrolled while pregnant. This program is only available by phone. Call 1-800-784-8669 (QUIT-NOW).

- Materials to promote [Quitline programs](#), including the Pregnancy and Postpartum program, can be [ordered](#) and shipped to organizations at no cost.
- A new English 8.5x11 poster to promote the \$40 gift card and updated business cards are available to order now. An updated Spanish poster will be available later this summer.
- Lisa Chaney from Greenbush shared a [link to their website](#) with additional tobacco cessation resources. <https://www.greenbush.org/t21/>

Derik Flerlage, Co-Bureau Director for KDHE Family Health, reported they have released updated childcare regulations for public comment due by July 18, 2024.

The Kansas Coalition Against Sexual & Domestic Violence is hosting an in-person training, From Screening to Supporting: Implementing Evidence-Based IPV Strategies in Birthing Facilities, on July 23, 2024, in Wichita. Additional information can be found [here](#).

The Kansas Infant Death and SIDS (SIDS) Network invites perinatal and infant professionals to apply for the upcoming 14th Biannual [KIDS Network Safe Sleep Instructor \(SSI\) Certification](#) training, which will be held September 26-27, 2024, in Wichita, KS. The network is especially interested in training instructors from Crawford, Dickinson, Greenwood, Greeley, Hodgeman, Cherokee, and Sumner counties.

Registration for the Heartland Conference on Health Equity & Patient-Centered Care is open. This in-person conference will be held in Kansas City on September 18-20, 2024. Information is found [here](#).

Kansas Youth Empowerment Academy (KYEA) will host Disability Mentoring Day for Shawnee County on October 23, 2024, in Topeka. The focus is on mentoring youth with disabilities toward employment.

The KU Center for Infant Mortality and Survival shared a save-the-date for their CRIBS Symposium on November 20, 2024.



	The KAAP Progress in Pediatrics conference will be held on November 8, 2024, in Salina, KS. Registration is now open. If you are interested in sponsorship and exhibitor opportunities, contact Angela Collier .
12:00 pm	Closing Remarks <i>Kari Harris, MD, KMCHC Chair</i>

This project is supported in part by the Kansas Department of Health and Environment with funding through the Health Resources and Services Administration (HRSA) of the US Department of Health and Human Services (HHS) under grant number #B04MC32543 and title Maternal and Child Health Services.



Kansas Maternal & Child Health Council (KMCHC) Meeting Minutes

Wednesday, October 9, 2024 – Kansas Health Institute, Topeka, Kansas

Members Present: Anji Antje, Brenda Bandy, Rebecca Bell, Heather Braum, Ali Braun, Linda Buchheister, Deena Carmona, Mariah Chrans, Jaquita Clark, Stephanie Coleman, Amy Dean Campmire, Drew Duncan, Kelsee Fout, Lisa Frey Blume, Holly Frye, Jason Geslois, Cory Gibson, Shalae Harris, Kari Harris, Stephanie Jerguson, Elaine Johannes, Shannon Kennedy, Jamie Kim, Brandi Markert, Jeni McDonald, Jill Nelson, Oluwakemi Onyenagubo, Amittia Parker, Zachary Ray, Cherie Sage, Katie Schoenhoff, Heather Schrotberger, Christy Schunn, Sookyung Shin, Lisa Shoop, Kayla Stangis, Kali Steelsmith, Juliet Swedlund, Cora Ungerer, Melissa Valenza, Maddie Wegner, Kendra Wyatt, Donna Yadrich, Daina Zolck

Guests: Jackie Catron, Abriona Markham

Staff: Denise Cyzman, Marisa Guerrero, Angela Collier

Agenda Item	Discussion	Actions and Decisions
Welcome and Member Introductions	Dr. Kari Harris, KMCHC Chair, welcomed everyone to this meeting and made a special welcome to a new Council member.	
KMCHC Member Spotlight	Brenda Bandy provided an overview of Kansas Breastfeeding Coalition, Brenda Bandy provided an overview of the Kansas Breastfeeding Coalition, a non-profit organization that promotes breastfeeding and supports breastfeeding mothers. Linda Buchheister from the Kansas Department for Aging and Disabilities Services gave an overview of the department and its work as Community Health Workers.	View Presentations Here

Panel Discussion: Care Extenders Jackie Catron, Linda Buchheister, Abriona Markham, Lisa Shoop, Brenda Bandy	Panelists discussed their work as care extenders (douglas, community health workers, parent peer support specialists, and lactation consultants) and how they provide wraparound services for the maternal and child populations in Kansas.	
Domain Work Group Discussion Preparation Denise Cyzman, KAAP	Denise Cyzman, KAAP outlined the expectations of the workgroup discussion.	
Domain Work Group Discussion	After lunch, the workgroups convened for their discussions.	
Mental Health Consultation and Resource Network Kelsee Fout	Kelsee Fout gave an overview of the Mental Health Consultation and Resource Network.	
KDHE Staff Announcements Kelsee Fout	Kelsee Fout introduced members of KDHE, including a few new staff members. Amy Dean-Campfire, Co-Bureau Director of Family Health Maddie Wegner, Child Health Consultant (new staff) Ali Braun, Family Systems Consultant Kali Steelsmith, Perinatal Infant Health Consultant (new staff) Jason Geslois, Senior Epidemiologist - Maternal Child Health (new staff) Zachary Ray, Advanced Data Analyst (new staff)	View Presentations Here
Domain Work Group Report Out	See Attachment A for a summary of the workgroup discussions.	
Member Announcements and Updates	Several members provided announcements about noteworthy events within their organization or community.	

Closing Remarks

Kari Harris, MD

Hearing no new business, Dr. Harris adjourned the Council meeting.

This project is partly supported by the Kansas Department of Health and Environment with funding through the Health Resources and Services Administration (HRSA) of the US Department of Health and Human Services (HHS) under grant number #B04MC32543 and title Maternal and Child Health Services.

October 9, 2024 Domain Workgroup Reports - Summary

Perinatal/Infant

Response to panel discussion: Today's presentation highlighted the need for greater acceptance of doulas in hospitals and emphasized the importance of consistency in messaging across various maternal and child health roles. They also called for medical providers to embrace all support roles, regardless of reimbursement, focusing on prioritizing the well-being of mothers and babies.

Special Project Update: The group is progressing with developing a multilingual postcard featuring a QR code, piloting distribution to 5,000 recipients statewide. Efforts are focused on ensuring language accessibility, tracking metrics such as zip codes, website traffic, and resource usage, and exploring how to expand website translation beyond the current four languages. The following steps include Drew sharing a postcard draft for group review by the end of October, determining website metrics that can be tracked, and consulting the communications team on ADA compliance. The group will meet in mid-November for final edits and reviews.

Child

Response to panel discussion: Today's presentation highlighted the Kansas Family Support Center's new DCF grant for Autism and the importance of peer-to-peer programs and inclusion initiatives. It emphasized the need for better compensation for families contributing their expertise, such as doulas supporting new parents, and the value of support groups as care extenders. Additionally, discussions focused on improving Community Health Worker (CHW) training to address childhood injuries and fostering partnerships to bridge programmatic gaps while continuing efforts to break down silos.

Special Project Update: The workgroup is progressing toward developing a policy recommendation, which is now guided by a new child health consultant to enhance focus. The *Help Me Grow* survey is being distributed to families, with results expected by mid-to-late November, and the group will review survey questions and results in their next meeting. Future steps include applying for IRB approval to conduct family focus groups with incentives, planning and holding these focus groups between January and April, analyzing responses, and drafting a policy recommendation for submission during the 2026 legislative session.

Adolescent

Response to panel discussion: The discussion highlighted disparities in certifications and training among healthcare extenders, emphasizing the need for sustainable funding and livable wages for Community Health Workers (CHWs), whose roles are often part-time or grant-funded. Programs like Retain works aim to integrate work as a health outcome by aligning employment opportunities with individual needs while encouraging employers to make accommodations. To strengthen the workforce, there is a push to engage high school students in CHW careers and explore pathways for adolescents to become Behavioral Health Technicians (BHTs), alongside efforts to incentivize continuing education for parent peers and CHWs.

Special Project Update: The group faced delays in approving a toolkit for Civic Health Month but shifted focus to addressing barriers to civic engagement, such as distance, lack of information, and systemic issues like redlining. Discussions explored using the \$1,500 special project funding to support youth-focused organizations like Telehealth Rocks or Loud Light, targeting ages 12-17, with a plan to empower these organizations to decide on fund use and report back. Elaine will draft a proposal summarizing these ideas for group review by October 18, after which it will be submitted to KAAP.

Women/Maternal

Response to panel discussion: The discussion highlighted the need for workforce development, better compensation for CHWs, lactation services, and parent-peer support, as well as improved collaboration to center care around moms and pregnant individuals. Concerns were raised about disparities in support for commercially insured and uninsured clients compared to Medicaid patients, calling for private insurers like BCBSK and Blue KC to engage in these discussions. Suggestions included addressing provider bias, integrating doulas more seamlessly into care plans (e.g., through standing orders or prenatal risk assessments), and ensuring timely payments to all involved in maternal and child health care.

Special Project Update: The workgroup is exploring opportunities to improve prenatal care by adopting a Universal Prenatal Risk Assessment (PRA), with training on Missouri's PRA scheduled for October 9. Key discussions include identifying critical medical risk factors like prenatal hypertension, addressing the challenges of integrating Health Information Exchanges (HIEs) due to cost and infrastructure barriers, and advocating for state funding to support Maternal and Child Health (MCH) initiatives. The following steps involve engaging with the Billing Task Force, promoting trauma-informed care for all staff, exploring value-based care models like Colorado's, and identifying potential funding sources, such as the Data Modernization Fund, to enhance care delivery and data systems.



**Kansas Maternal & Child Health Council (KMCHC)
Meeting Minutes**
Wednesday, January 15, 2025 – Virtual Meeting

Members Present: Ali Braun, Amy Dean-Campfire, Antje Anji, Brandi Markert, Brenda Bandy, Cari Schmidt, Carrie Akin, Cherie Sage, Christy Schunn, Cora Ungerer, Cristi Cain, Deborah Alliston, Deena Carmona, Dione Guyton, Drew Duncan, Elaine Johannes, Elizabeth Whitson, Heather Braum, Heather Schrotberger, Holly Frye, Jamie Kim, Jaquita Clark, Jeni McDonald, Jennifer Bruning, Jennifer Miller, Juliet Swedlund, Kali Steelsmith, Kari Harris, Karly Lauer, Katie Schoenhoff, Kayla Stangis, Kelsee Fout, Kendra Wyatt, Kourtney Bettinger, Kristi Weaver, Linda Buchheister, Lisa Chaney, Lisa Frey Blume, Lisa Shoop, Madeline Wegner, Mariah Chrans, Melissa Valenza, Oluwakemi Onyenagubo, Paige Leonard, Patty McNamar, Rebecca Bell, Sara Hortenstine, Shalae Harris, Shane Morris, Stacy Clarke, Stephanie Coleman, Stephanie Jerguson, Susan Pence, Tara Wells

Guests: Monique Koerner, Pempho Moyo, Patricia Fox, Elizabeth Whitson

Staff: Denise Cyzman, Marisa Guerrero, Angela Collier

Agenda Item	Discussion	Actions and Decisions
Welcome and Member Introductions	Dr. Kari Harris, KMCHC Chair, welcomed attendees and made a special welcome to new members Sapphire Garcia and Tara Wells.	
KMCHC Member Updates	Heather Schrotberger, Executive Director of the Kansas Head Start Association, discussed KHSA's mission and vision and its services in the state of Kansas. Dr. Deborah Alliston, Clinical Associate Professor at KU School of Medicine, discussed the medical school and her role as a professor, as well as the pediatric clinic.	View Presentations Here (Pages 5-19)
State Child Death Review Board	Sara Hortenstine provided an overview of the State Child Death Review Board, emphasizing the importance of understanding the factors leading to these deaths to prevent future occurrences. Sara	View Presentations Here

Sara Hortenstine, Executive Director, Child Death Review Board	Hortenstine also shared information specific to infant deaths from 2018-2022, noting most deaths are natural deaths. The second highest cause of death for infants is Sleep-Related Sudden Unexpected Infant Death (SUID), in which the cause is not obvious before investigation, usually occurring during sleep or in the infant's sleep area. Only 21% of infants were placed in a crib or bassinet at the time of death, while 53% occurred while the infant was sleeping on an adult bed. Ms. Hortenstine shared a link to the annual report, which provides comprehensive data and recommendations for preventing child and infant deaths.	View Presentations Here (Pages 20-39)
Birth Defects Program Drew Duncan, Birth Defects Program Section Chief Paige Leonard, Birth Defects Program Coordinator	Paige Leonard presented on the Birth Defects Program, highlighting its vision, key events, and recent activities. The program is responsible for the collection of information concerning birth defects (congenital anomalies), stillbirths and abnormal conditions of newborns and children up to the age of five in the state. It then creates a surveillance system for data collection used to review and verify reports and conduct any necessary follow-ups. Ms. Leonard also highlighted the need for specific funding to support the program and the importance of strengthening collaboration with other programs.	View Presentations Here (Pages 41-50)
Kansas Legislative Session and Federal Policy Updates Heather Braum, Senior Policy Advisor, Kansas Action for Children	Heather Braum, Senior Policy Advisor with Kansas Action for Children, provided a legislative session update. She discussed the fast-paced nature of the session, key dates, and changes in the House and Senate leadership. Heather also highlighted the changes in the Health and Human Services Committee and the Social Services Budget Committee, and the need for stable revenue sources for programs. She also mentioned the upcoming budget hearings for large agencies like DCF, KDHE, and KDADS. Next, she provided an overview of KAC's tracking of key issues, including tax policy, social issues, education funding, and health, highlighting potential property tax relief and the need to protect maternal and child health services. She also discussed support for Medicaid expansion and potential federal funding cuts. She encouraged the council to stay informed through the Statehouse Snapshot Weekly Newsletter.	View Attachment B for more details and links presented by Ms. Braum.
Expectations for Domain Work Groups	Denise Cyzman reviewed the expectations for the Domain Workgroups and then adjourned the meeting for a break before the workgroups reconvened for a 1-hour discussion and working meeting.	
Domain Work Group Report Out	See Attachment A on the next page for a summary of the workgroup discussions.	
Member Announcements and Updates	Throughout the virtual meeting, members shared numerous resources and information. A compilation can be found online here: KMCHC Jan 15 Compilation Links and Resources.pdf	
Closing Remarks Kari Harris, MD	Hearing no new business, Dr. Harris thanked everyone for participating and adjourned the Council meeting.	

This project is partly supported by the Kansas Department of Health and Environment with funding through the Health Resources and Services Administration (HRSA) of the US Department of Health and Human Services (HHS) under grant number #B04MC32543 and title Maternal and Child Health Services.

Women/Maternal

Response to presentations: The group appreciated the legislative update and found the Child Death Review insights valuable, especially regarding SUID awareness. The group agreed with the need for dedicated funding for the birth defects program. There is an opportunity to align with the State Legislature and Senator Marshall to support Kansas MCH work and funding. The discussions reinforced the importance of staying informed and engaged in legislative matters.

Special Project Update: The group discussed the impact of Missouri's redesigned NOP process and the opportunity to apply lessons in Kansas. They explored tangible maternal health initiatives, including expanding maternal mental health resource distribution, integrating hotline information into patient materials, and leveraging digital tools like patient portals and QR codes. There was interest in engaging the State Employee Health Plan and pediatric offices for broader outreach. Additionally, a potential collaboration with KHIN was noted to bridge MCH and HITECH efforts.

Perinatal/Infant

Response to presentations: The group is excited for Dr. Quinlan's upcoming GPHC presentation in March. The Birth Defects program remains unfunded and is tied to Newborn Screening statutes, with legislative education being a key challenge. There was surprise about a potential state grant, though concerns remain about possible legislative restrictions. The Medicaid billing expansion through schools is on hold, while the *Transforming Maternal Health (TMaH) Model* will provide \$17 million over 10 years, fostering Medicaid collaboration across state agencies.

Welcoming Babies Initiative – Pilot Project

- **Goal:** Send a postcard to 5,000 families with normal newborn screening specimens, providing links to helpful resources.
- **Launch Date:** March 1st

Details:

- The postcard will include a QR code linking to the [Welcoming Kansas Babies on the Newborn Screening website](#), which features program descriptions and resources.
- Website administrators can update content even after launch.
- There was discussion about including an additional card on Safe Sleep, potentially sent with birth certificates through Vital Statistics.
- A text-based resource, Vroom, was suggested, though it should be verified as KDHE-approved.
- WIC currently uses similar information, and additional resources, such as Pelvic Floor Therapy and Breastfeeding "911" from KBC, will be added.
- A handout with the QR code and brief details will be prepared for distribution at GPHC.

Child

Special Project Update: The children's group is creating a template for local organizations to customize with behavioral health resources, while awaiting survey results to inform future policy recommendations.

Adolescent

Response to presentations: There is still work to be done in the area of Safe Sleep. It was noted that sleep-related deaths receive less media attention compared to other causes of death. However, it is encouraging that the challenges parents face are being considered in safe sleep education. Heather's presentation raised concerns.

Special Project Update: The adolescent group will collaborate with the Kansas Leadership Center on infusing civic health into their youth leadership curriculum and training. The group discussed funding a trusted youth organization focused on civic health and engagement, considering initiatives like KLC's *Mobilizing Youth to Lead* and YLink. There was interest in supporting an existing civic health curriculum for expansion rather than developing a new one. Advocacy dates were noted, including School Mental Health Advocacy Day (Jan. 23), Prevention Advocacy Day (Feb. 26), and Youth Mental Health Advocacy Day (Mar. 13). The group also expressed interest in inviting KLC to KMCMC and learning more about CCBHCs' role in adolescent health. Potential partnerships with KSDE to offer KLC training to educators were discussed, and KAAP will handle funding distribution.



**Kansas Maternal & Child Health Council (KMCHC)
Meeting Minutes
Wednesday, May 7, 2025 | 10:00 am to 2:00 pm
Kansas Health Institute, 212 SW Eighth Street, Suite 300, Topeka, KS 66603**

Members Present: Carrie Akin, Brenda Bandy, Kourtney Bettinger, Heather Braum, Ali Braun, Christi Cain, Lisa Chaney, Stacy Clarke, Amy Dean Campmire, Stephen Fawcett, Geno Fernandez, Kelsee Fout, Lisa Frey Blume, Holly Frye, Jason Geslois, Kirstianna Guerrero, Kari Harris, Sara Hortenstine, Elaine Johannes, Jamie Kim, Patricia McNamar, Jennifer Miller, Jill Nelson, Oluwakemi Onyenagubo, Susan Pence, Cherie Sage, Cari Schmidt, Heather Schrotberger, Christy Schunn, Sookyung Shin, Kayla Stangis, Cora Ungerer, Kristi Weaver, Maddie Wegner, Tara Wells, Stephanie Wolf, Kendra Wyatt, Donna Yadrich

Guests: Vanessa Eberle, Heather Gould, Pempho Moyo

Staff: Denise Cyzman, Marisa Guerrero

Agenda	Discussion	Actions and Decisions
Welcome and Member Introduction	Dr. Kari Harris, KMCHC Chair, welcomed attendees and gave a special welcome to new members and guests.	
KMCHC Member Update	Donna Yadrich, MPA, Family Caregiver/Advocate for Children, and KMCHC Family and Consumer member, provided an update on her work and her experience as a caregiver. Elaine Johannes, PhD, KHF Distinguished Professor in Community Health and State Extension Specialist - Youth Development, Kansas State University, provided an update on her work at K-State.	

<p>Roles and Responsibilities of KMCHC Kari Harris, MD, FAAP</p>	<p>Dr. Harris reviewed the KMCHC member roles and responsibilities, as identified in the KMCHC Bylaws and Guidance Documents. These are:</p> <ol style="list-style-type: none"> 1. Advise state leadership 2. Promote information exchange 3. Foster collaboration 4. Engage in work groups 5. Attend and contribute to meetings 6. Recommend new members 	<p>View Presentation Here (Pages 7-8)</p>
<p>2025 Legislative Update Heather Braum, Health Policy Advisor, Kansas Action for Children</p>	<p>Heather Braum provided an overview of the state's 2025 legislative session, which concluded on April 12, 2025. She also facilitated a discussion on Presidential executive orders and other policy changes emerging from his office and cabinet.</p>	
<p>Title V Block Grant Jennifer Miller, State MCH Director/Title V Director, Kansas Department of Health and Environment</p>	<p>Dr. Miller provided a federal update on the Title V Block Grant and HRSA's Maternal and Child Health Bureau, as well as a state-level update that included the development of the new Office of Early Childhood and recent KDHE staffing changes.</p> <p>She reviewed key findings from the Title V MCH needs assessment, which identified significant challenges across maternal and child health populations. These include barriers to preventive care, chronic disease risks, maternal mortality, limited access to obstetrical and behavioral health services, and substance use among women. Infant concerns include high mortality rates, preterm birth, low birth weight, drug exposure, and SUID. Children face low rates of developmental screening, poor school readiness, injuries, ACEs, and fragmented care coordination. Adolescents experience rising firearm deaths, behavioral health issues, limited sexual health education, and challenges transitioning to adult care. Children with special health care needs encounter difficulties accessing specialty care, maintaining continuity, and addressing behavioral health and bullying.</p> <p>Dr. Miller concluded by introducing draft priorities for the state action plan and outlining opportunities for public input before the plan is finalized.</p>	<p>View Presentation Here (Pages 11-28)</p>

School-Based Medicaid Enrollment Services Grant Heather Gould, Project Director, KDHE Division of Health Care Finance	In July 2024, KDHE was awarded a \$2.5 million CMS grant to support the implementation of school-based health services. This funding will help Kansas secure ongoing Medicaid dollars to integrate and sustain comprehensive health services in schools, including mental health care, and improve student access to needed care. Health Gould shared an overview of the grant and KDHE's implementation plan.	View Presentation Here (Pages 29-39)
Workgroup Expectations Denise Cyzman, Executive Director, KAAP	Denise Cyzman reviewed the expectations for the Domain Workgroups and then adjourned the meeting for lunch/networking before the workgroups reconvened for a 1-hour discussion and working meeting.	
Domain Work Group Discussion and Report Out <ul style="list-style-type: none"> • Women/Maternal • Perinatal/Infant • Child • Adolescent 	See Attachment A for a summary of the workgroup discussions.	
Member Announcements and Updates Denise Cyzman, ED, KAAP	Throughout the virtual meeting, members shared numerous resources and information. A compilation can be found online here: KMCHC May 7, 2025 Compilation Links and Resources .	
Closing Remarks & Adjourn Kari Harris, MD, KMCHC Chair	Hearing no new business, Dr. Harris thanked everyone for participating and adjourned the Council meeting.	

This project is supported in part by the Kansas Department of Health and Environment with funding through the Health Resources and Services Administration (HRSA) of the US Department of Health and Human Services (HHS) under grant number #B04MC32543 and Title V Maternal and Child Health Services.

2025 KMCHC Meetings

July 23, 2025 – 9 am to 12 pm
Virtual Meeting

October 15, 2025 – 10 am to 2 pm
Topeka and Shawnee County Public Library - 1515 SW 10th Ave., Topeka, Kansas
(New Location)

Women/Maternal

Response to Presentations: The work group discussed how to leverage professional roles and lived experience to advocate for MCH programs. Members expressed concern about recent and potential federal-level changes and how these may affect state-level work, including implications for data sources such as PRAMS. It was noted that PRAMS funding is currently secured through September.

The group discussed the need to better inform the public about legislative changes, given that policy information is often difficult to access. Ideas included developing a newsletter or similar communication tool focused on policy education for community members. The discussion also highlighted the importance of leveraging existing relationships to advocate effectively, particularly for individuals whose professional roles limit direct policy or advocacy engagement.

Special Project Update: The group received an update on HRSA maternal mental health materials. Kayla is contacting HRSA's new lead for maternal mental health to request updated materials. While the hotline remains active, recent staffing reductions have created uncertainty about program oversight. Kayla will work with the HRSA project officer to explore sending materials directly to hospitals to streamline distribution, and the group discussed using PSI or KCC as alternatives if HRSA is unable to ship materials directly.

There was no update on the perinatal risk assessment screening tool; Jill will follow up with Dr. Bettinger. Kendra shared positive feedback from Missouri on the effectiveness of their universal screener. The group discussed how Missouri is using its risk assessment, including a special project in which MOHealthNet required MCOs to use a single prenatal risk assessment form. Key operational indicators include ensuring accurate contact information, particularly phone numbers, which has led to greater use of case management and earlier identification of patients needing intervention. Missouri has seen increased MCO responsiveness, especially for high-risk patients, resulting in improved access to support services.

The group noted the importance of having TMaH representation on the Council to keep efforts aligned. There was also discussion about engaging the State Employee Health Plan and encouraging provider network involvement, potentially starting with KDHE human resources liaisons.

As an FYI, Jill has had an initial conversation with TMaH about identifying key stakeholders for future discussions, and a TMaH update will be included at a future KMCHC meeting. Currently, the work group's special project - universal risk assessment screening - remains on hold pending updates from Medicaid.

Next Steps:

1. Send Maternal Mental Health Hotline materials directly from HRSA to Hospitals –
2. Get an update on HRSA maternal mental health materials
3. Follow up with someone from Medicaid to get an update on the risk assessment screening.

Perinatal/Infant

Response to Presentations: The group discussed both state and federal funding concerns, with questions raised about funding for newborn screening (NBS) and long-term sustainability. While the federal Newborn Screening Committee was reportedly disbanded, state-level funding is secure for the current year.

It was recommended that a crosswalk be developed to identify KDHE programs that rely on federal funding, along with an assessment of threat level and potential impact.

Participants discussed the need to plan proactively for potential funding reductions, including downsizing programs if necessary to preserve core services. It was suggested that advocacy messaging be refined to clearly link policy and funding decisions back to their impact on children – is this helpful to our children? The group also noted that state-level legislative leaders could serve as messengers to federal partners by highlighting state budget implications.

Concern was expressed about the potential loss of PRAMS data and how to maintain comparable data collection at the state or local level without federal support. Recommendations included storing data locally, maintaining hard copies, and exploring how other entities have archived data during government closures. It was noted that local managed care organizations have already begun discussing strategies to secure data while it remains available. The discussion highlighted the distinction between data cleaning and data storage, as well as the technical capacity required to manage data independently.

The group also discussed how the community can restore and recover following major changes to funding structures and systems. To continue these conversations, Brenda offered to host a 30-minute recurring huddle to discuss current political developments and their potential impact on the work and populations served, proposed for Friday afternoons through the First 1000 Days group.

Special Project Update: The Work Group received an update on the “Welcome Baby” postcard project, which aims to send a postcard to all families with a baby born in Kansas, highlighting available resources. Newborn screening postcards are currently being distributed, with an initial batch of 300 sent during the first week of April. The program has continued mailing approximately 300 postcards per week, with plans to increase to 500 per week, until all 5,000 printed postcards are used. Early feedback indicates increased traffic to the Screening and Surveillance website, suggesting families are accessing information more quickly. The NBS team is also exploring whether partner organizations promoted on the website are seeing increased utilization.

The committee discussed the importance of retrieving and preserving data to anticipate potential data loss. The NBS team reported tracking website views and noted spikes following outreach efforts, including QR code distribution at a public health conference and the initial postcard mailings. The committee recommended further analysis to better understand individual user access patterns.

Funding sustainability was a key discussion point. The cost of the postcards was reported to be approximately \$1 per postcard, and additional funding will be needed to continue the project. Committee members raised questions about how long current funding will last, whether weekly distribution could be increased to better match the average number of births in Kansas, how the initial 5,000 postcards are being allocated, and what costs are included in the per-postcard estimate.

Suggestions included promoting the postcards through libraries and BAM, and exploring partnerships with nonprofit organizations to reduce mailing costs through bulk rates.

Next Step:

1. The Work Group questions and recommendations will be shared with the Newborn Screening program for follow-up.

Child

Special Project Update: The special project discussion began with a conversation about the desired direction of the meeting. Because survey results are not yet available, the group agreed to pivot from the original plan. There was brief discussion about potentially using the care coordination survey results to inform future policy recommendations once the data are available.

Given ongoing uncertainty, the group discussed shifting the project's focus to the preservation of existing programs. A new project idea emerged to support KAC with collecting and sharing Head Start testimonies and stories, potentially expanding this approach to other programs at risk of funding cuts. The group discussed key messaging considerations and the possibility of offering stipends to individuals who provide testimony.

Next Step:

1. Identify the topics we want to focus on depending on what has the most chance of being cut.

Adolescent

Response to Presentations: The Work Group discussed the need to better organize messaging and identify clear next steps. The conversation focused on outreach related to autism assessment, including challenges families face in obtaining timely assessments before age-related eligibility limits result in loss of access to services.

Special Project Update: The Work Group received an update on a Kansas Leadership Center (KLC) grant supporting the integration of civic engagement activities into a youth leadership curriculum. The curriculum is currently being piloted with KC Women on the Move, Clay Center Y-Link, and groups in Hutchinson and Wichita. Once the pilot is complete, the Work Group will use the findings to inform potential expansion efforts. It was noted that KLC does not currently have representation at KMCHC meetings, and the group recommended inviting KLC to present or participate. Following discussion, the Work Group agreed to focus its efforts on civic health and to partner with KLC to incorporate health topics into a youth civic health curriculum. KLC is currently implementing this work with four organizations.

The group also discussed the disaster preparedness continuum, including preparation and mitigation, response, recovery, restoration (typically three to five years), and long-term resilience. The group expressed interest in inviting the Governor's Behavioral Health Services Council Youth Committee, which focuses on youth mental health, to present at a future meeting.

Next Steps:

1. Cora will send SAP to Linda to share with the youth committee.
2. Youth committee will provide public input on the Adolescent part of the SAP.
3. KDHE will email the KLC workplan to the Adolescent domain.

Kansas MCH Council Website

(One Year: Oct 1, 2024 –Sep 30, 2025)

<http://kansasmch.org/>

Data from Google Analytics



Definitions

Views: The total number of pages viewed. Repeated views of a single page are counted.

Users: Users who have initiated at least one session during the date range. In this case, unique users within each month.

Sessions: A session is the period of time a user is actively engaged with your website; a group of interactions one user takes within a given time frame on your website. Google Analytics defaults that time frame to 30 minutes, meaning whatever a user does on your website (e.g. browses pages, downloads resources, purchases products) before they leave equals one session.

Bounce Rate: The percentage of all sessions where users only viewed a single page on your website.

Data Dashboard

Users	Sessions	Session/User	Views	Views/User	Avg Duration	Bounce Rate
7,618	10,930	1.43	42,585	5.59	1m 49s	43.06%

Summary Points

- From Oct 1, 2024 –Sep 30, 2025 the site had an average 635 users each month who viewed an average 3.90 pages during each session.
- The website had 42,585 views with January 2025 having the largest number of views at 13,167 recorded.
- The website recorded 2,186 files downloaded by users. (*This does not include PDFs that were viewed, but not saved to a user's device*)

Additional Data

- About 74.7% of users visited the site on desktop, 24.9% on mobile devices, and less than 1% on a tablet.
- After the [home](#) page, the most viewed pages during this time range were the [KCC Psychiatric Care Coordination](#) page, [Family Advisory Council About Us](#) page, and the [Kansas Connecting Communities](#) page.
- The home page is generally the most visited page on our website. It received 24,400 views from Oct 1 2024- Sep 30 2025.
- Most users were located in Kansas City, followed by Wichita, Chicago, and Topeka.
- 96% of our users' primary language is English, 1% Spanish, and various other languages made up the remaining 3%.
- 99% of site visitors were new, less than 1% were returning visitors.

- 45% of users found the website through direct links, 38% from related searches, and 16% from social media. The remaining found the website through emails.
- The average session duration was 1 minute and 49 seconds.
- **Top 3 Action Alerts by Views**
 - The [National Breastfeeding Month](#) page received 449 views
 - The [Folic Acid Awareness](#) page received 228 views
 - The [Women’s Health Month](#) page received 212 views

Family Advisory Council

- With 1,927 views, the FAC pages made up 4.53% of total website traffic.

Top Five FAC Pages by Views:

1. [FAC About Us](#) - 1328 views
2. [FAC Members](#) - 176 views
3. [FAC Materials](#) - 114 views
4. [FAC Goal](#) - 77 views
5. [FAC Meetings](#) - 67 views

Kansas Connecting Communities*

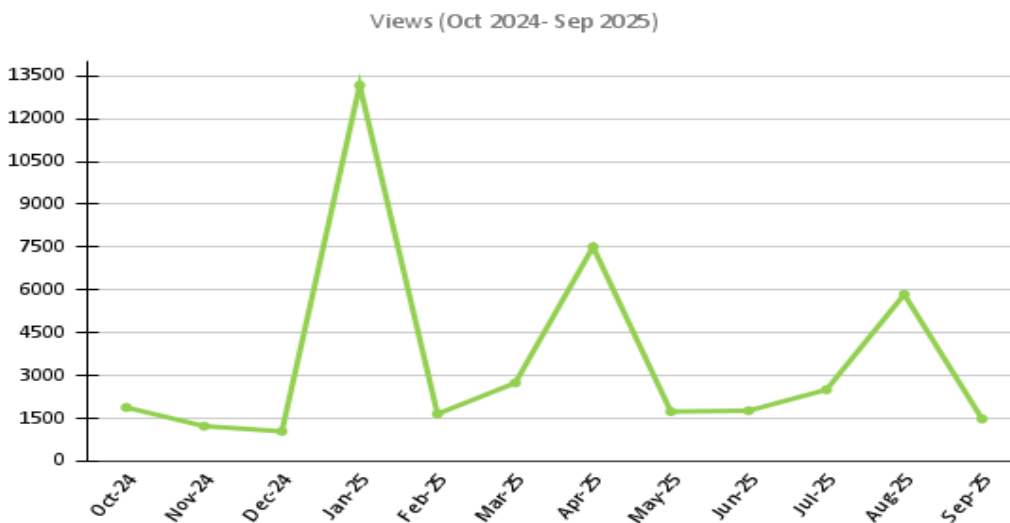
* KCC’s reporting period differs slightly from our typical reporting period for KMCHC, with the KCC data shown being from 9/30/2024 - 9/29/2025.

- With 5,835 views, the KCC pages made up 13.7% of total website traffic.

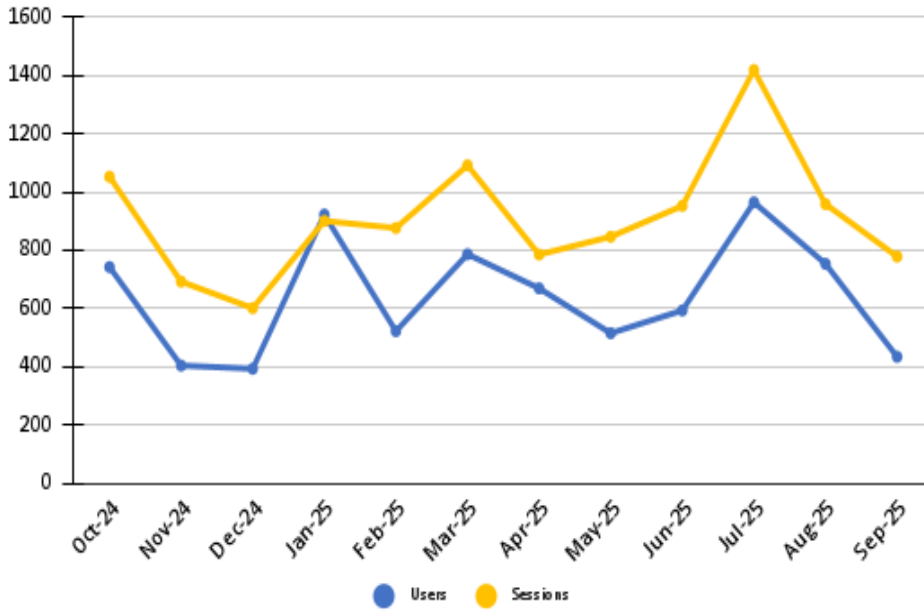
Top Five KCC Pages by Views:

- [KCC Home](#) - 2,127 views
- [KCC Psychiatric Consultation Care Coordination](#) (archived)- 1,254 views
- [KCC Resources](#) - 1,004 views
- [KCC Education and Training](#) - 579 views
- [KCC About](#)- 336 views

Summary Charts (Oct 1, 2024 - Sep 30, 2025)



Users and Sessions (Oct 2024 - Sep 2025)



Kansas Maternal & Child Health Facebook Insights (Oct 1, 2024 – Sept 30, 2025)

Data was pulled in late October 2025



Table of Contents

Facebook Page Follows Oct 1 2024 - Sept 30 2025	Page 1
Total Posts and Average Monthly Posts.....	Page 1
Top 10 Posts: Oct 1, 2024 – Sept 30, 2025	Pages 1-5
Total Reached Each Month.....	Page 6
Total Shares Each Month.....	Page 6
Total Post Interactions Each Month.....	Page 6

Total Posts (Oct 2024 – Sept 30, 2025)

270

Average Monthly Posts

~21 monthly posts

Page Follows	93
Total Posts	270

Top 10 Posts by Reach (October 1, 2024 – September 30, 2025)

* next to the "Reach" number indicates the post was boosted with paid advertising

1. Maternal Mental Health

National Maternal Mental Health Hotline



August 21, 2025

*Reach: 8,327

Views: 8,785

Shares: 3

Reactions: 3

Caption: Becoming a new parent can be hard. It is normal to feel down, worried, and overwhelmed after having a baby. You are not alone. Mental health challenges are common during this time and there is no shame in seeking help. If you need someone to talk to, call or text the National Maternal Mental Health Hotline at 1-833-TLC-MAMA (1-833-852-6262) any time. It's free and confidential.

#MaternalMentalHealth #TLCMAMA

2. Input Survey Feedback

June 24, 2025

*Reach: 6,228

Views: 9,528

Shares: 15

Reactions: 12

Caption:

We want to hear from you! Your input matters on the Title V Maternal Child Health Block Grant. Please review the pieces of work that matter most to you and

complete a short online survey, <https://www.kansasmch.org/block-grant.aspx>.

We look forward to seeing your thoughts and incorporating your feedback into our future work across Kansas! 🌻💙

Responses to this feedback survey are kept strictly confidential. The deadline to share your input through this survey is July 11, 2025.

3. Input Survey Feedback

Kansas Maternal & Child Health Partner
We need your feedback!

As part of the Title V Maternal & Child Health (MCH) Services Block Grant Federal-State partnership, Kansas makes the annual application and report available to the public for the purpose of gathering input. We have created an online survey to collect information, opinions and perspectives from consumers and partners across the state. As a key partner informed of and concerned about the needs of MCH populations, services and resources we invite you to share your input. Find more information online at: www.kansasmch.org

Your input is very important to us and will be kept strictly confidential.

Take the survey here:
<https://arcq.is/98LSn0>

The survey will open for public input on June 23 and close on July 11, 2025.

July 7, 2025

***Reach: 3,913**

Views: 5,551

Shares: 12

Reactions: 6

Caption: Submit your public input by this Friday, July 11th! 🕒

We want to hear from you! Your input matters on the Title V Maternal Child Health Block Grant. Please review the pieces of work that matter most to you and complete a short online survey <https://www.kansasmch.org/block-grant.aspx>. We look forward to seeing your thoughts and incorporating your feedback into our future work! 🌻💙

4. Input Survey Feedback

Kansas Maternal & Child Health Partner
We need your feedback!

As part of the Title V Maternal & Child Health (MCH) Services Block Grant Federal-State partnership, Kansas makes the annual application and report available to the public for the purpose of gathering input. We have created an online survey to collect information, opinions and perspectives from consumers and partners across the state. As a key partner informed of and concerned about the needs of MCH populations, services and resources we invite you to share your input. Find more information online at: www.kansasmch.org

Your input is very important to us and will be kept strictly confidential.

Take the survey here:
<https://arcq.is/98LSn0>

The survey will open for public input on June 23 and close on July 11, 2025.

July 1, 2025

***Reach: 3,678**

Views: 5,016

Shares: 5

Reactions: 4

Caption: Whether you're a parent, health professional, government official, advocate, or member of the general public, MCH activities touch your life. Please review the pieces of work that matter most to you and complete a short online survey <https://kansasmch.org/block-grant.aspx>. We look forward to seeing your thoughts and incorporating your feedback into our future work! 🌻💙

The deadline to share your input through this survey is July 11th.

5. Car seat Safety



January 3, 2025

Reach: 640

Views: 1,149

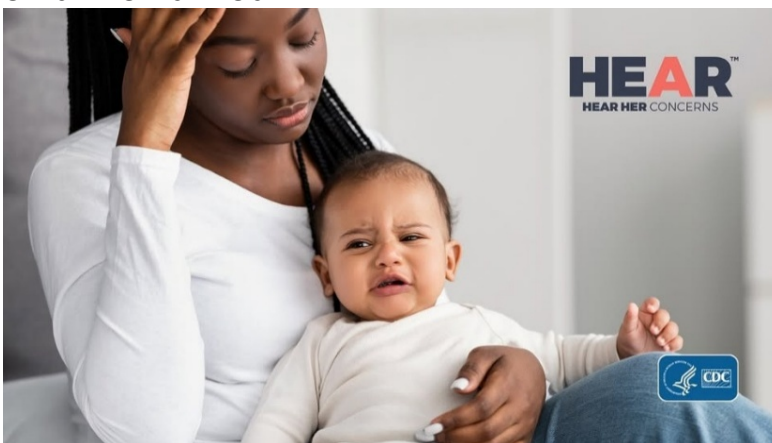
Shares: 7

Reactions: 9

Caption: Winter can be a tricky time for car seats. 🧸❄️ As a general rule, bulky clothing, including winter coats and snowsuits, should not be worn underneath the harness of a car seat.

Here are a few tips to help strike that perfect balance between keeping little ones warm as well as safely buckled in their car seats. ➡️
tinyurl.com/wintertimecarseatsafety

6. Maternal Mental Health



February 11, 2025

Reach: 457

Views: 648

Reactions: 2

Shares: 2

Caption: Is someone you love pregnant or had a baby in the past year? Listen to them if they express any concerns. Learn about the urgent maternal warning signs. Acting quickly and helping them get immediate care could help save a life.

#HearHer <https://bit.ly/CDChearHerAdvocates>
#MaternalHealth #MaternalHealthAwareness

7. Safe Sleep



July 10, 2025

Reach: 403

Views: 699

Reactions: 1

Shares: 5

Caption: Remember to have babies sleep alone, on their back, and in a clutter-free crib every time. To find out more about what safe sleep is, visit www.kidsks.org/safe-sleep.html

8. Breastfeeding



March 10, 2025

Reach: 329

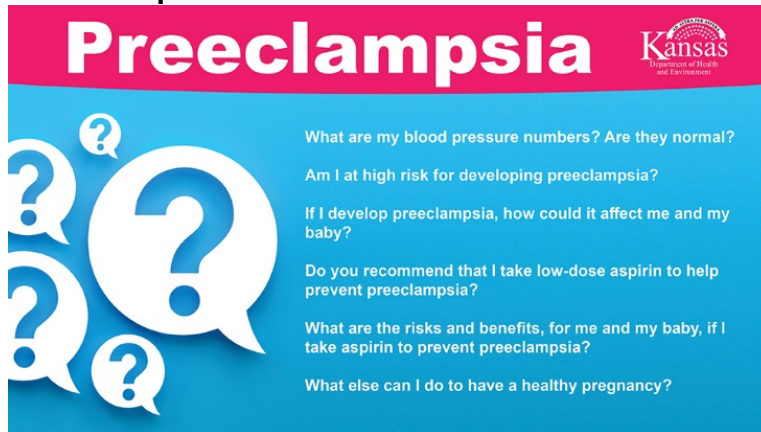
Views: 514

Reactions: 3

Shares: 8

Caption: Breastfeeding reduces the risk of SIDS. Providing breastmilk to your baby for as little as two months has been shown to significantly reduce the risk of SIDS, whether you're breastfeeding exclusively or combination feeding! Find Local Breastfeeding Resources: <http://ksbreastfeeding.org/resources/>

9. Preeclampsia Awareness



May 28, 2025

Reach: 328

Views: 470

Reactions: 2

Shares: 6

Caption: What do I ask the doctor about #Preeclampsia? Keep these questions in mind at your next appointment.

10. Kansas Home Visiting Program



April 16, 2025

Reach: 324

Views: 569

Reactions: 2

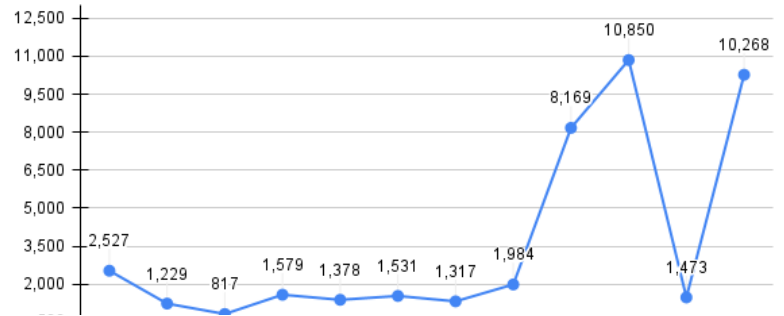
Shares: 4

Caption: Kansas Home Visiting is free & flexible! Home Visiting programs are as unique as the families they serve. All Kansas families with pregnant mothers and/or with children ages birth to five years, can participate! Learn more:

Facebook Page Reach

10/24 – 9/30/25	43,122
-----------------	--------

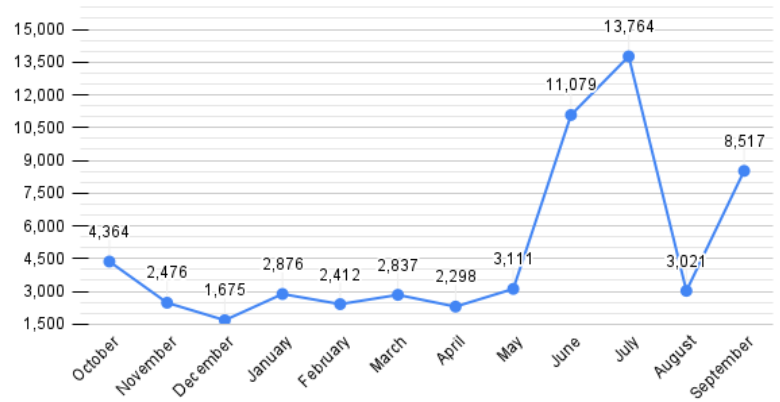
Total Reached Each Month



Facebook Page Views

10/24 – 9/30/25	58,430
-----------------	--------

Total Views Each Month



Facebook Post Interactions*

10/24 – 9/30/25	962
-----------------	-----

*Post interactions include shares, reactions, and comments on a post.

Total Post Interactions Each Month

