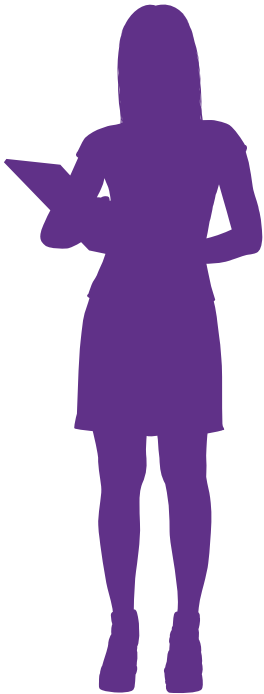


— Preventing Youth Suicide —

DO YOU KNOW WHAT TO DO?



If I am a school employee, I can...

- **Be willing to listen** without judgment.
- **Download the Columbia Suicide Severity Rating Scale** screener tool and champion protocol changes for successful implementation within my school or district: cssrs.columbia.edu/the-scale-in-action/schools.
- **Use my Communities that Care data** to guide decisions about how to implement prevention initiatives: kctcdata.org.
- **Promote the Suicide & Crisis Lifeline** (988) in consistent ways throughout the school year such as printing the number on student ID cards.
- **Social emotional learning initiatives** that focus on building social skills especially problem-solving skills are effective upstream efforts to reduce suicide and other risky behaviors in students.
- **Implement evidence-based screening** for depression and suicide for the entire student body. Depression is treatable, and suicide is preventable! Early identification and referral to treatment will support students who are experiencing higher risks for suicide.
- **Participate in the National Alliance on Mental Illness (NAMI) Provider Education Program** or the Ending the Silence for School Staff presentation: namikansas.org/programs/for-professionals.

Help and resources are available!

Organization	Contact Information
Suicide & Crisis Lifeline	988 988lifeline.org
Substance Abuse and Mental Health Services Administration (SAMHSA)	samhsa.gov/find-help/suicide-prevention
Suicide Prevention Resource Center	sprc.org
Kansas Suicide Prevention Resource Center	ksphq.org/resourcecenter
National Alliance on Mental Illness - Kansas	namikansas.org
Kansas School Safety Hotline	1-877-626-8203 ksde.org/Agency/Fiscal-and-Administrative-Services/School-Finance/School-Bus-Safety/School-Safety-Hotline
Kansas Department for Aging and Disability Services (KDADS)	State Suicide Prevention Coordinator 785-296-4528 kdads.ks.gov/commissions/behavioral-health <small>*Contact for resource and capacity-building assistance; if you or someone you know is struggling with suicidal thoughts, call or text the Suicide & Crisis Lifeline at 988.</small>
Kansas Attorney General	Kansas Youth Suicide Prevention Coordinator 785-368-8465 Suicide Prevention App - Kansas - A Friend AsKS ag.ks.gov/victim-services/youth-suicide-prevention
Kansas Prevention Collaborative	kansaspreventioncollaborative.org <small>*Includes Kansas data for the 7 behavioral health indicators</small>
Your Local Community Mental Health Center (CMHC)	kdads.ks.gov/kdads-commissions/behavioral-health/community-mental-health-centers
Kansas Department for Children and Families	Family Crisis Response Helpline 1-833-441-2240 https://bit.ly/3e6llTh
Kansas Department of Health and Environment	Whole Healthy You kdhe.ks.gov/671

